

HIGHLANDS – INFO



FISH PARTNER AGENTS



Kristjan Rafnsson
CEO/Founder/Owner
+354 898 3986
kristjan@fishpartner.com



Gunnar Örn Petersen
Chairman/Owner
+354 665 8865
gunnar@fishpartner.com

INTRODUCTION

We are delighted that you will be joining us trout fishing next season, and we appreciate the confidence you have placed in Fish Partner and our trout fishing program. Everyone in our company will work hard to make your experience on our waters an unforgettable one. We know your expectations are as high as ours.

The following information has been prepared based on decades of firsthand experience by us and our guides. We have seen Icelandic waters in acute low water conditions, in full spate, and every condition in-between. We pride ourselves in being able to have our guests catch fish even in the harshest conditions.

This info sheet is specifically about fishing in the rivers Kaldakvísl and Tungnaá of the Highlands. It includes detailed information on flies, tackle fishing spots etc.

We have also prepared an info sheet on fishing in Iceland with practical information on disinfection of tackle, weather, safety and more. If you have not received such sheet, please ask your Fish Partner contact to provide you one.

For more information, please visit our website www.fishpartner.com or send us an e-mail to info@fishpartner.com.



GENERAL INFORMATION

The Highlands are truly the heart of Iceland. With its uncanny beauty and epic scenery the Highlands offer you an experience unlike any other. Here you can truly become one with nature as the Highlands are untouched and uninhabited by men. The vast wilderness - mountains, deserts, canyons, lakes and rivers - demonstrates the powerful forces of fire and ice which have shaped the landscape on this volcanic island over centuries. The geological extremes are unlike any other. Next to dark sands one can find bright glowing green moss, red rocks or boiling water. Amidst all of this beauty there is the trout and the arctic char - peacefully cruising the gin clear streams of the Highlands like it has done from the Ice age. The experience cannot be put into words - it has to be lived.

River Kaldakvísl

The river Kaldakvísl is truly a hidden gem. Fished only by a select few, Kaldakvísl has now been made exclusively available only to the customers of Fish Partner. Words are unequal to the task of describing the landscape's beauty. Diversity and contrasts are the river's main characteristics. On the 12 km (16 mile) beat, one can find beautiful waterfalls, great canyons, fast water, slow water, rocks, sand and so much more. The river is full of arctic char, their size averaging at 3-4 lbs, although char weighing up to 7 lbs can be found there, as can big brown trout.

The upper part of the river flows through inaccessibly deep canyons, and it is in these canyons where the char and trout can grow to their full size, safe from anglers. The river has a four rod limit. It's hard not to fall in love with Kaldakvísl once you've had the chance to get to know her.

River Tungnaá

Tungnaá is a former glacier milky river that have been running for thousands of years until the year 2013 where the government constructed a hydro dam for energy production. This governmental action let to us an incredible beautiful highland stream running in the center of the former huge riverbed with extraordinary surroundings created by the glacier milky river.

Tungnaá is a trout fishing paradise offering fly only fishing in a diverse and fascinating 4 rod river with gin clear spring water flowing in to beautiful micro canyons area along with traditional fast and slow running pools, filled with brown trout and big arctic char. This smallish, south Iceland Highland trout stream is probably one of the best kept trout secrets in global angling. It is a technical river where stealth, among other attributes, is needed. The quarry is native brown trout and monster chars. They are on average 3 pounds, with the monsters ranging to 12 pounds.



TACKLE AND FLIES

When fishing rivers Kaldakvísl and Tungnaá we recommend single handed rods (9-10") for 4-6 weight lines and 4-8 lbs. leaders. Floating lines are mostly used. Up-stream nymphing is the most productive method of fishing but in the right conditions dry-flies can be strong. Streamers are also used, especially in high-water conditions and when searching for fish.

We know how important is to have the right flies when the catching gets tough and the fish become selective.

Although the following suggestions are based on our experience, we encourage our guests, especially fly tiers, to bring their own secret weapons as well. As fishermen, we know that nothing beats the feeling of catching a nice fish on your own fly.

We recommend that all flies brought to Iceland are new and unused flies.

Nymphs



Hare's Ear.
Sizes: 12-20



Higa's SOS.
Sizes: 12-20



Krókurinn.
Sizes: 12-20



Mobuto.
Sizes: 12-20



Pheasant Tail (also with beadhead).
Sizes: 12-20



Peacock (also with beadhead).
Sizes: 12-20



Peacock with tail (also with beadhead).
Sizes: 12-20



Copper John (Icelandic version).
Sizes: 12-20



Copper John.
Sizes: 12-20

Dry-flies



Black Gnat Dry Fly.
Sizes: 14-20



Elk Hair Caddis Dry Fly.
Sizes: 14-20



Royal Coachman Dry Fly.
Sizes: 14-20

Streamers



Black Ghost Classic Streamer.
Sizes: 6-10



Black Ghost Fish Skull (or beadhead)
Streamer.
Sizes: 6-10



Black Ghost Sunburst Fish Skull (or
beadhead) Streamer.
Sizes: 6-10



Mickey Finn Fish Skull (or beadhead)
Streamer.
Sizes: 6-10



Dentist Fish Skull (or beadhead)
Streamer.
Sizes: 6-10



Thingeyingur Fish Skull (or beadhead)
Streamer.
Sizes: 6-10



TDF-Black UV Leech.
Sizes: 6-10



Black Nobbler Streamer.
Sizes: 6-10

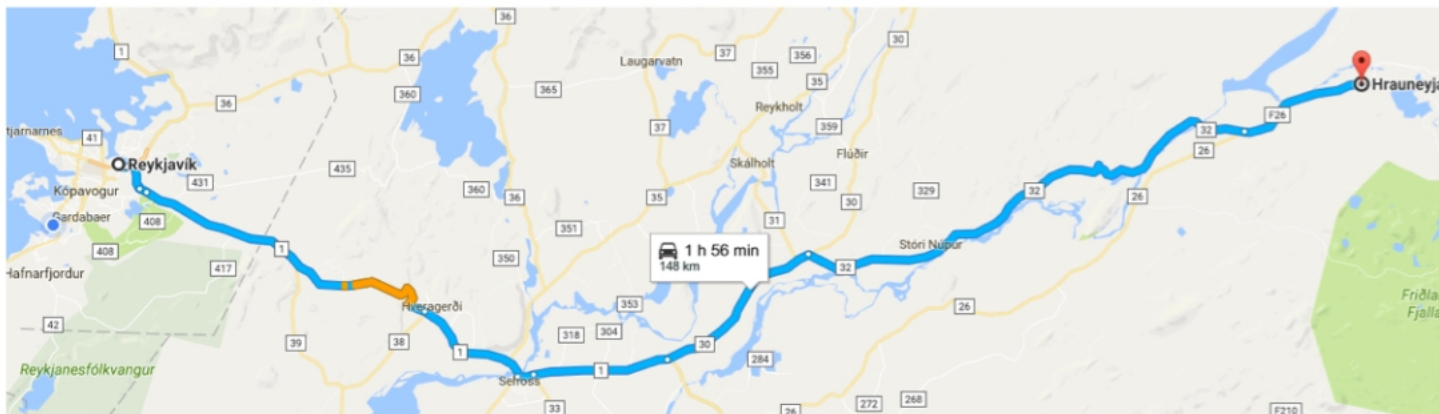


Green Nobbler Streamer.
Sizes: 6-10

LOCATION AND MAPS

Hrauneyjar Highland Center is 2 hours drive from Reykjavík. Take road no. 1 (eastbound) and take left turn onto road no. 30 and then right turn onto road 32.

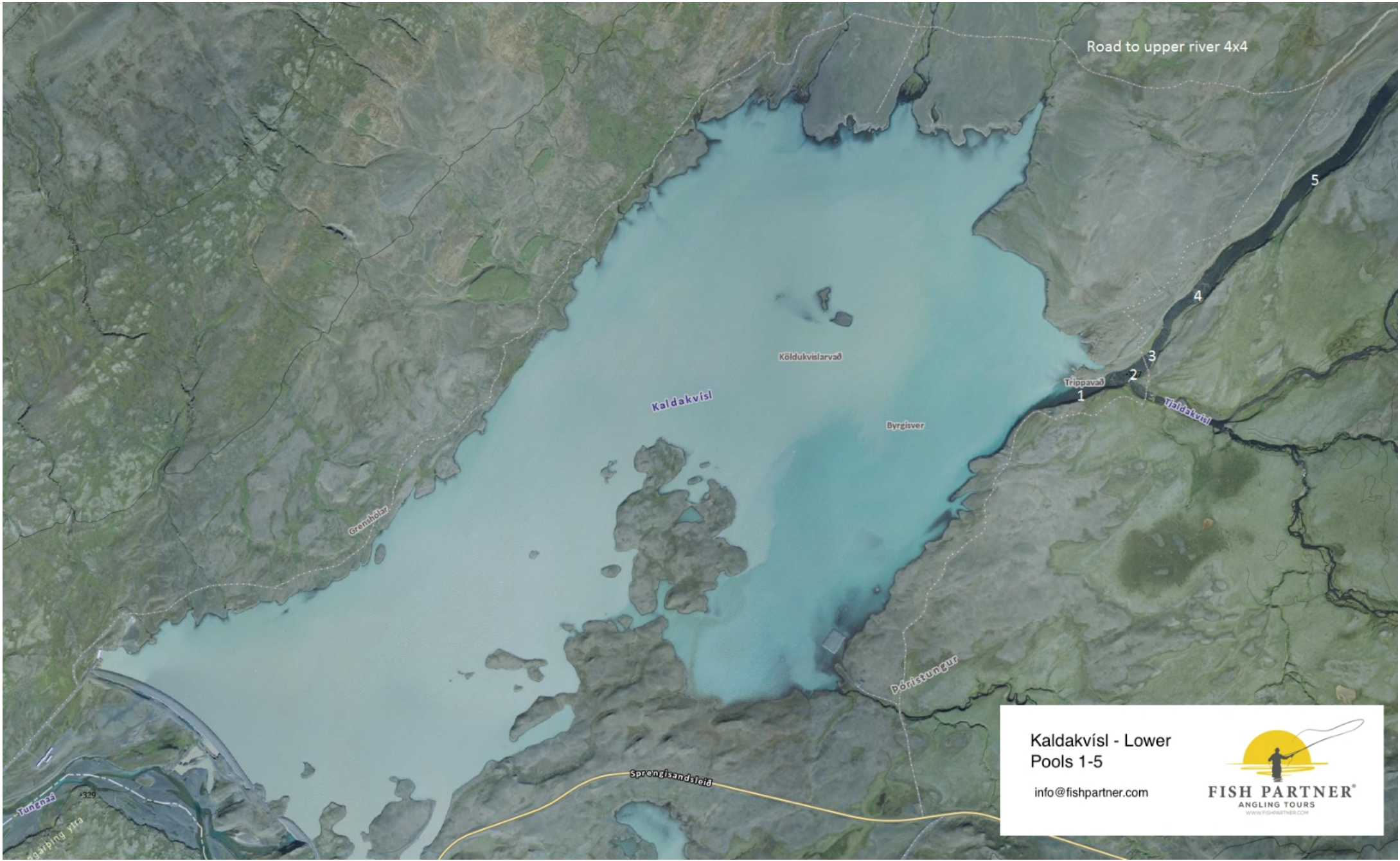
Hrauneyjar is close to both Kaldakvísl and Tungnaá.



Below is an overview map of rivers Kaldakvísl and Tungnaá.

Fishing maps of both rivers are on the following pages





Kaldakvísl - Lower
Pools 1-5

info@fishpartner.com



FISH PARTNER
ANGLING TOURS
WWW.FISHPARTNER.COM

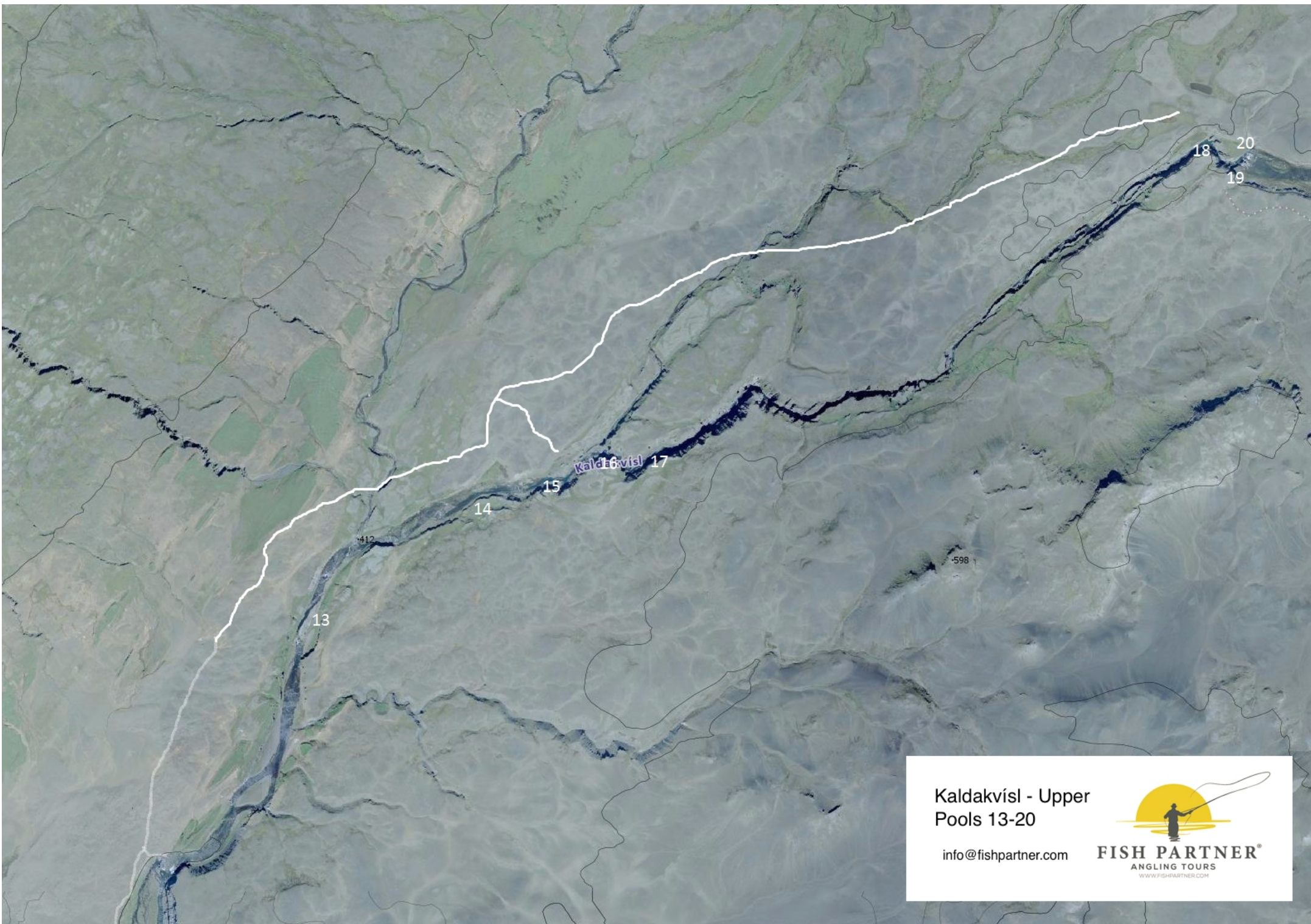


Kaldakvísl - Middle
Pools 6-11

info@fishpartner.com



FISH PARTNER
ANGLING TOURS
WWW.FISHPARTNER.COM

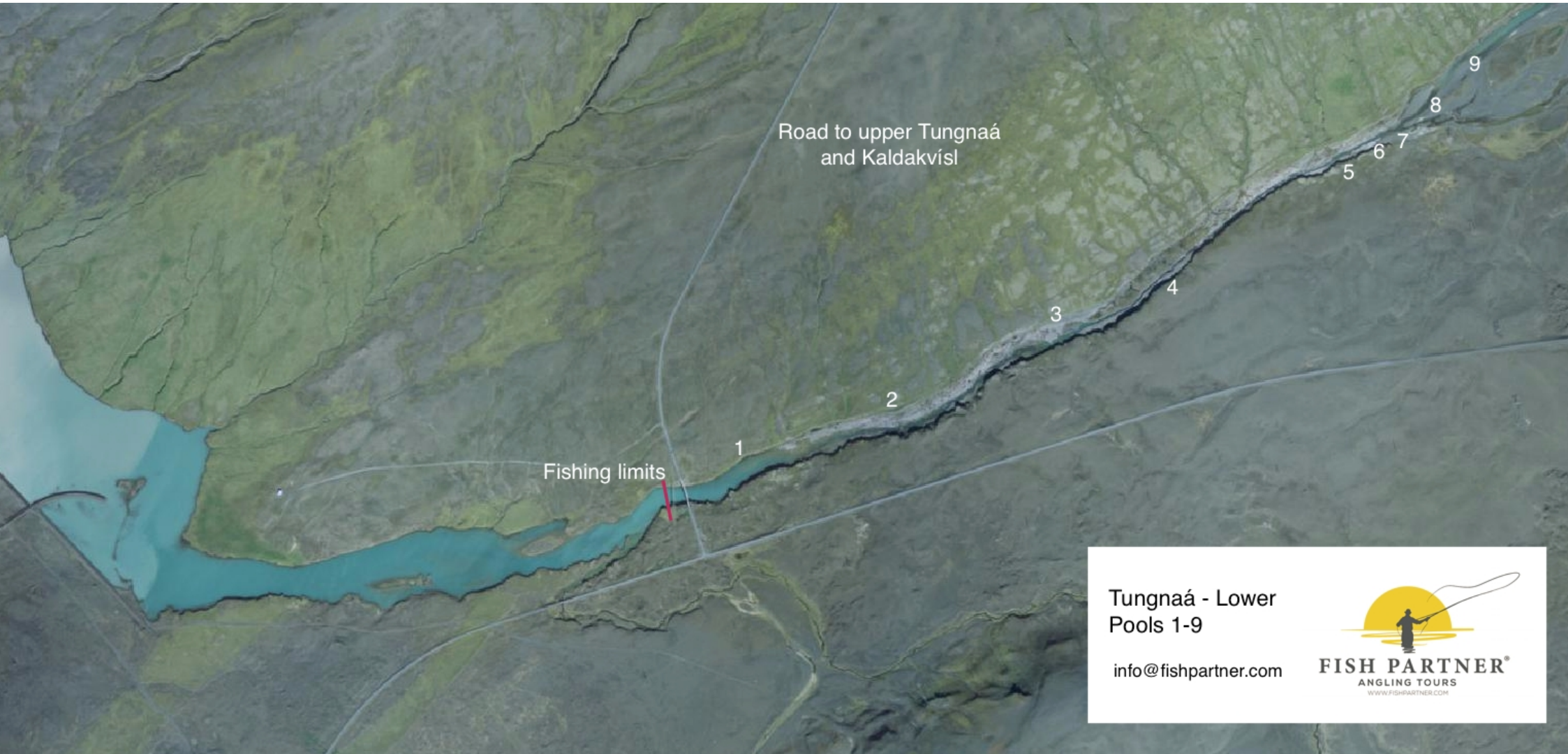


Kaldakvísl - Upper
Pools 13-20

info@fishpartner.com



FISH PARTNER[®]
ANGLING TOURS
WWW.FISHPARTNER.COM



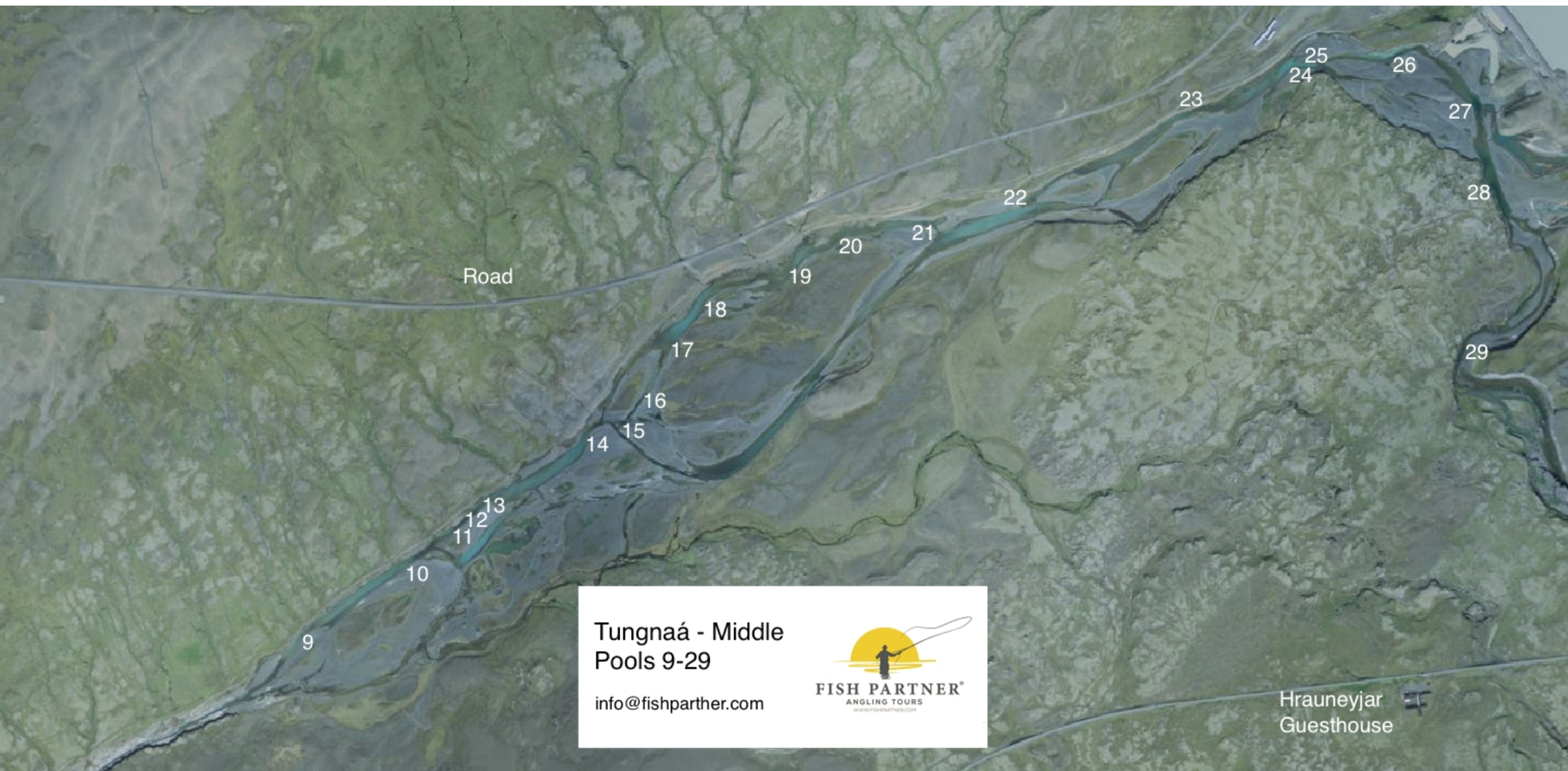
Road to upper Tungnaá
and Kaldakvísl

Fishing limits

Tungnaá - Lower
Pools 1-9

info@fishpartner.com





Road

9

10

11

12

13

14

15

16

17

18

19

20

21

22

23

24

25

26

27

28

29

Tungnaá - Middle Pools 9-29

info@fishparther.com



Hrauneyjar Guesthouse

29

30

31

Hrauneyjar
Guesthouse

Tungnaá - Upper
Pools 29-31

info@fishpartner.com



FISH PARTNER[®]
ANGLING TOURS
WWW.FISHPARTNER.COM